

BRIDGE MANAGEMENT SYSTEM

BR-2500

Bridge Alert Management

Conning Platform

Customized Integration



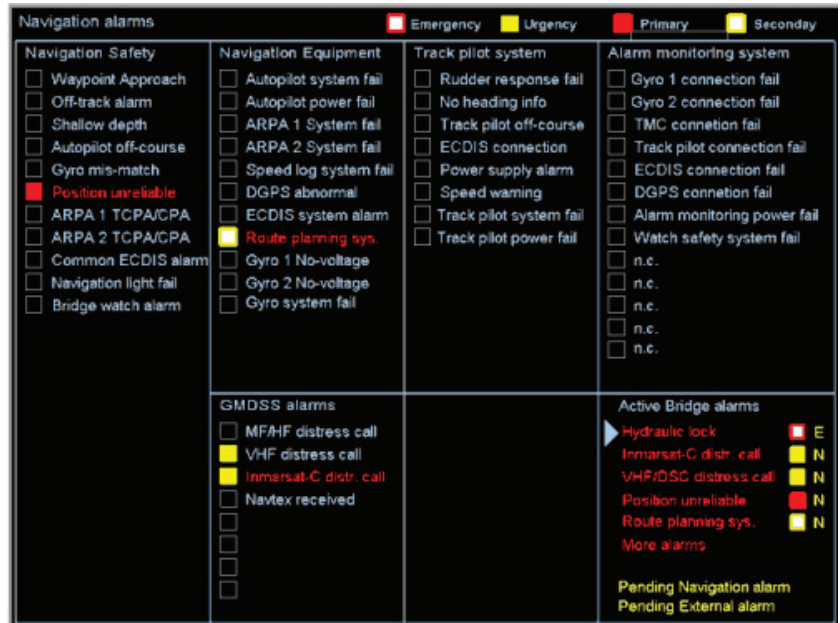
FURUNO FINLAND OY

Centralized Bridge Alert Management

The Alert Management System centralizes the alerts on the bridge to the reach of navigator as required by the rules of classification authorities. Alerts are displayed in the order of priority and the operator can recognize and acknowledge them without losing touch to his main task - navigation of the ship.

The status of the latest 20 active alerts are shown on the alert pages providing decision support. User can also view all the alerts of the system that are shorted by groups. On these pages the navigator can see also which alarms are pending i.e. acknowledged but still active. The alert history records the 1000 latest alert events.

Note! Also standard BNWAS system Furuno BR-500 can be connected in the system.



Alert page

Conning platform

Normally the operator will have one of the conning pages active in his display. Bridge Management System BR-2500 allows the customer to specify his own conning pages in addition to the ones required by the classification.

In case of an alert a buzzer will sound and a blinking text describing the cause of the alarm will appear in the "Active bridge alarm" area. Different color codes are used to indicate the priority of the alert. the ARPA processor.



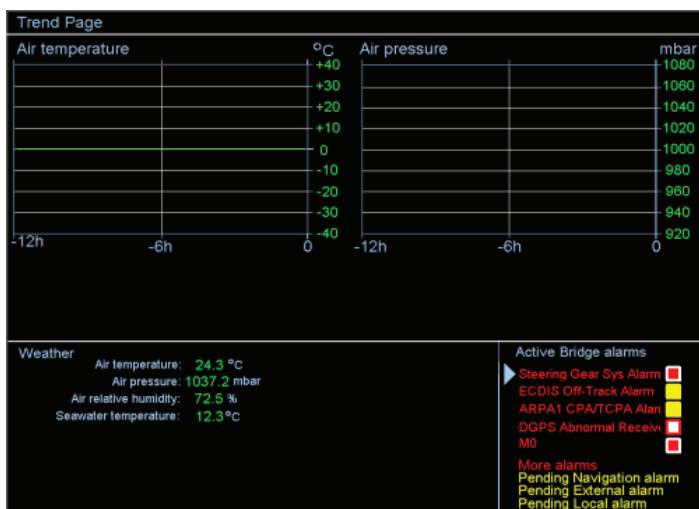
Conning page

Customized Integration

The Bridge Management System BR-2500 provides possibility to integrate different kind of systems:

- Weather information system
- Watertight doors indications
- Fire alarms
- Hull opening indications
- Navigation lights
- Trend pages
- etc.

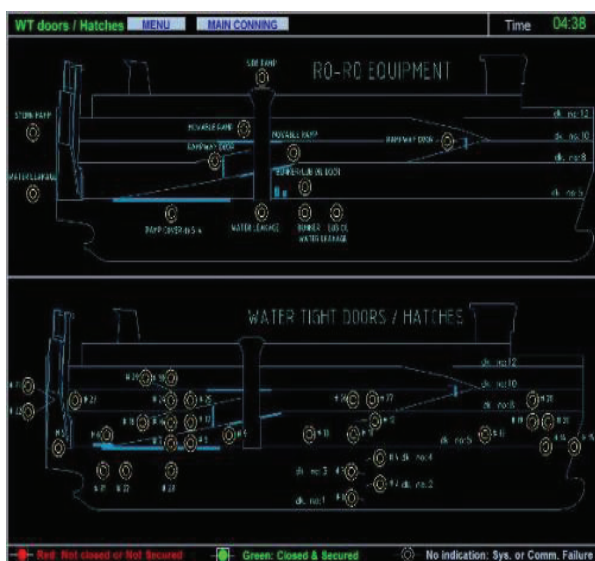
The information is shown on specially designed pages according to customer specifications. The data on customized pages is received via the data interface of BR-2500 Electronic Unit (see BR-2500 system diagram).



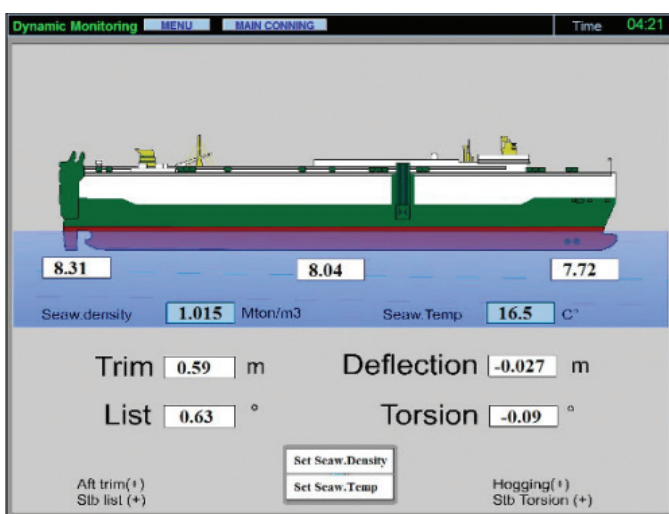
Weather trend page



Hull opening indication page

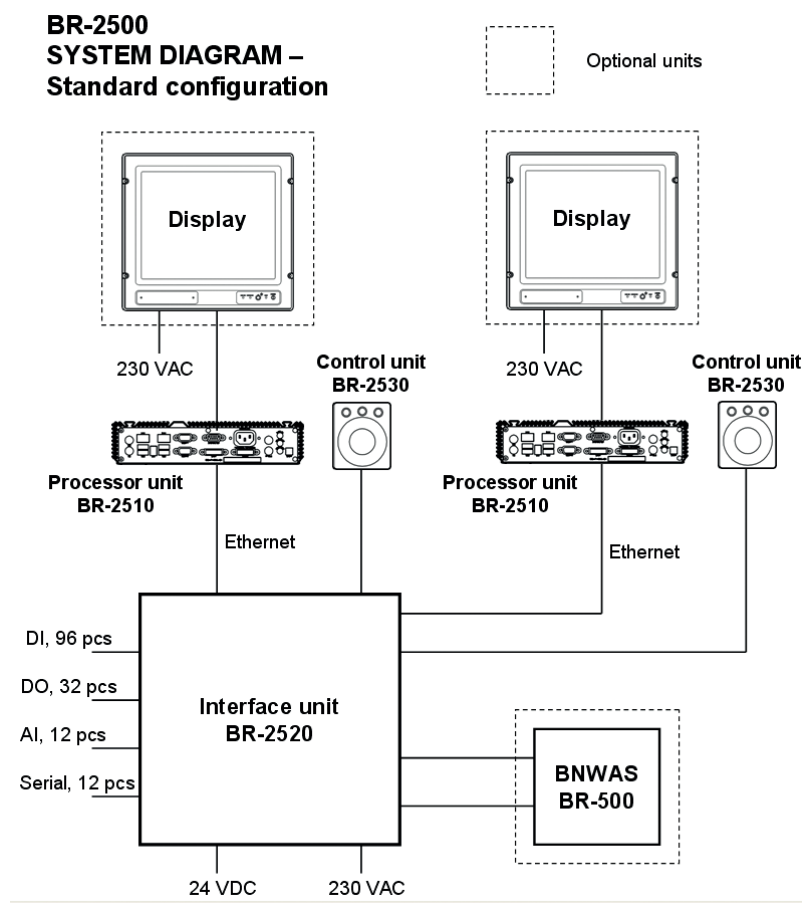


Fire alarm page



Dynamic monitoring page

Interconnection diagram



AVAILABLE BR-2500 CONFIGURATIONS		
A	BR-2500 Standard Configuration 1. Processor Unit BR-2510 2 pcs 2. Electronic Unit BR-2520 1 pc 3. Control Unit BR-2530 2 pcs 4. BR-2500 Software License	Note! Max. number of interfaces: - Digital inputs 90 pcs (alarms, status etc.) - Digital outputs 38 pcs (alarm ack etc.) - Analog inputs ($\pm 10V$) 12 pcs (propulsion etc.) - Serial 18 pcs (NMEA, Modbus, ECDIS, Gyros, etc.)
B	BR-2500S – for simplified systems 1. Processor Unit BR-2510 2 pcs 2. Electronic Unit BR-2520S 1 pc 3. Control Unit BR-2530 2 pcs 4. BR-2500S Software License	Note! Max. number of interfaces: - Digital inputs 58 pcs (alarms, status etc.) - Digital outputs 30 pcs (alarm ack etc.) - Analog inputs ($\pm 10V$) 8 pcs (propulsion etc.) - Serial 12 pcs (NMEA, Modbus, ECDIS, Gyros, etc.)
C	BR-2500C – Conning platform 1. Processor Unit BR-2510 1 pc 2. Electronic Unit BR-2520C 1 pc 3. Page Scroll Button 4. BR-2500C Software License	Note 1! Only the conning system included! Note 2! Max. number of interfaces: - Serial 6 pcs (NMEA, Modbus, ECDIS, Gyros, etc.) - Analog inputs ($\pm 10V$) 4 pcs (propulsion etc.)



FURUNO FINLAND OY

www.furuno.fi

Your Furuno contact: